

2022-2023 F150 Lightning Front License Plate Mount

This is for those in states that require a front license plate who do not want to drill holes in their truck. This clamp on front license plate frame for a 2022 or 2023 F150 Lightning does not block the front sensors. Airflow remains sufficient to maintain the battery/motor temperature, though testing has not been done in temperatures over 90 deg F.

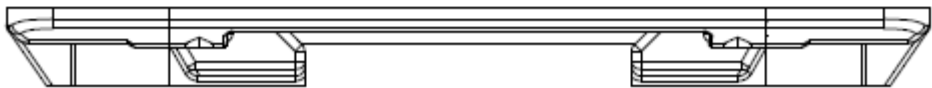
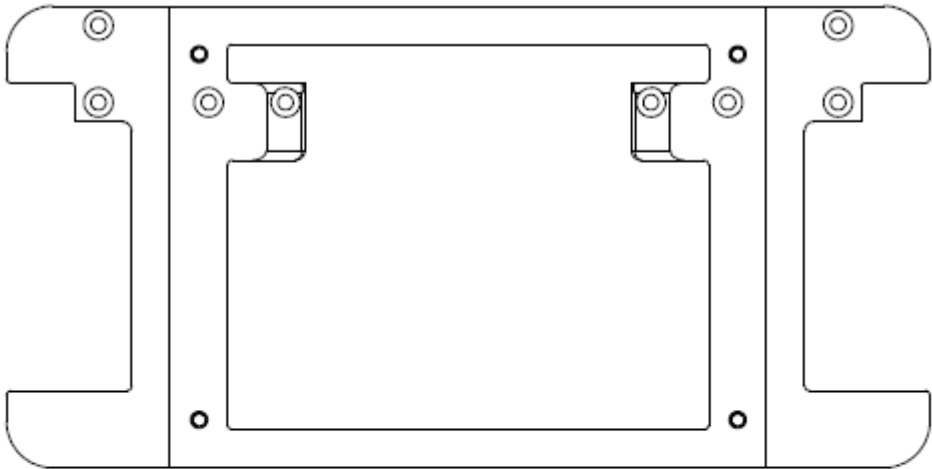
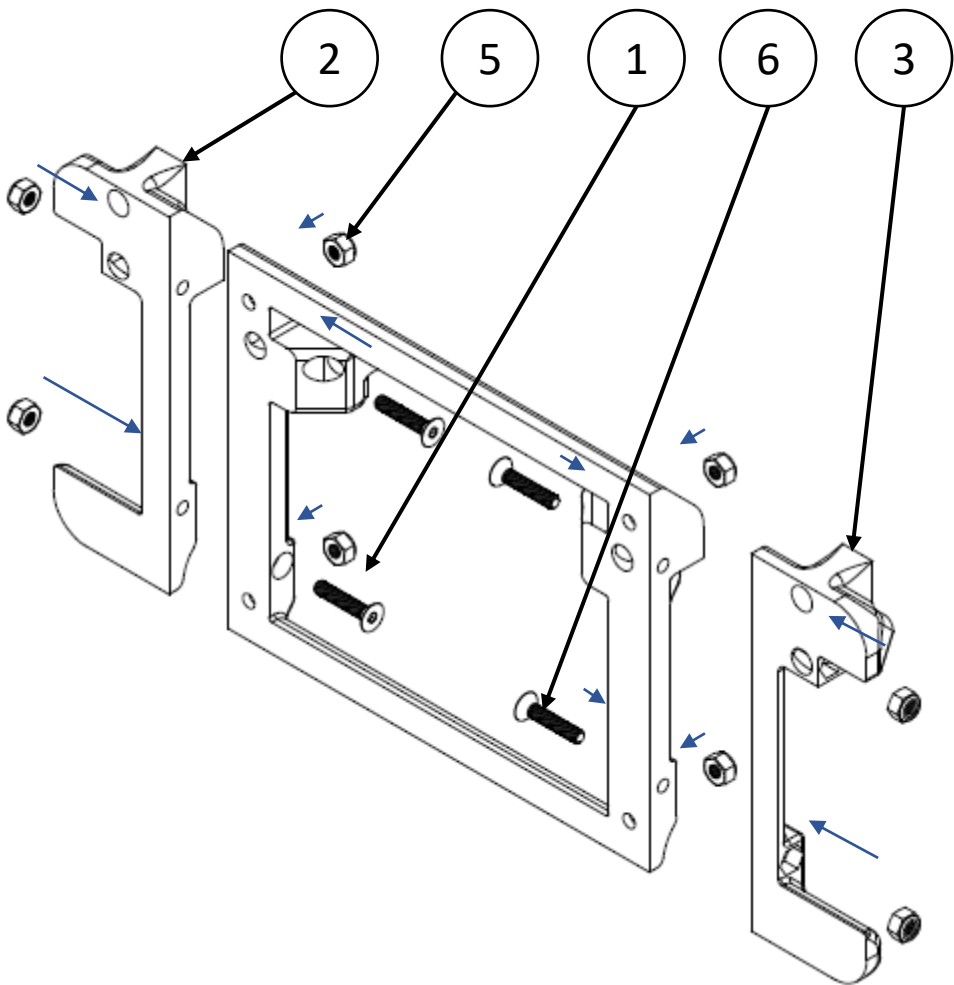


- Clamp on design.
 - No drilling, no glue, screws are nearly invisible.
- 3D Printed, Print bed size: 7.8" X 6.0"
 - Example is printed on a Prusa Mk3S printer.
- Printed Parts: Main Frame, Left Frame, Right Frame, 4 Grille Clamps
- Assembly Hardware:
 - 16 - #10-32 Nylock Nut
 - 12 - #10-32 X 1" Flat Head screw (Hex drive works best)
 - 4 - #10-32 X ½" Pan Head Screw (License Plate Mounting Screw)



2022-2023 F150 Lightning Front License Plate Mount Frame Assembly

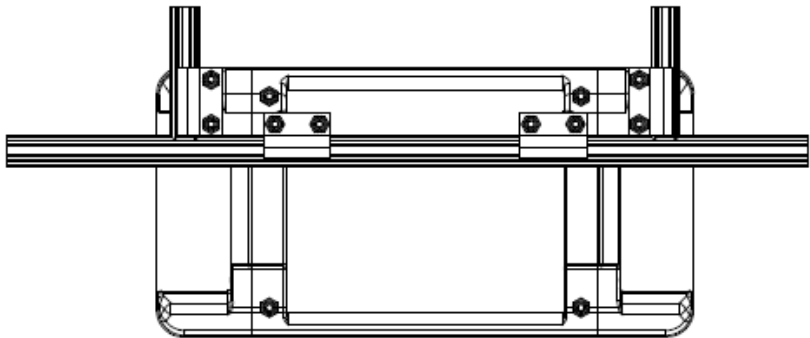
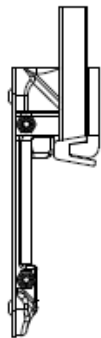
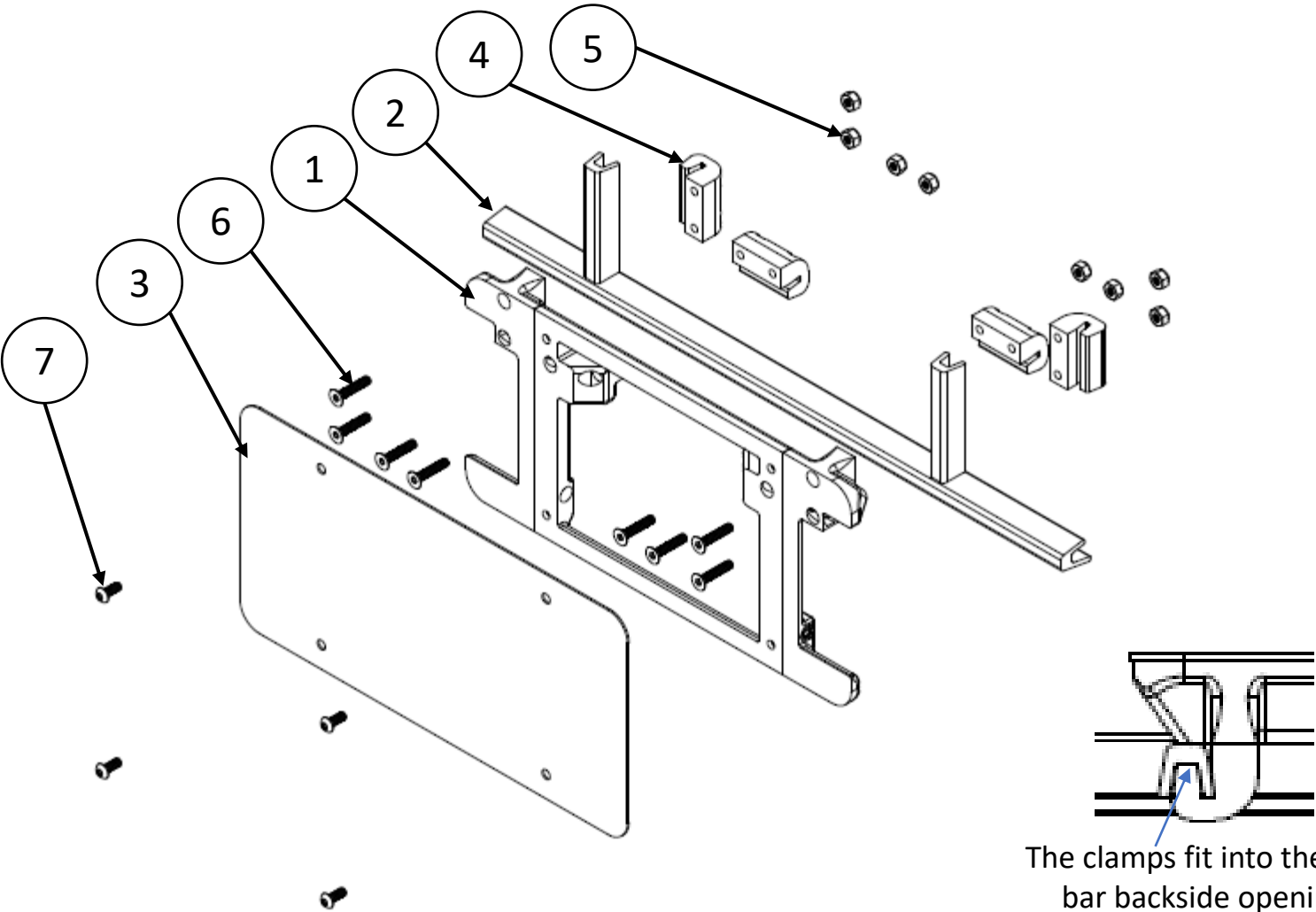
- 1. Install nuts (Item 5) into the right and left frames (Items 2 & 3)
- 2. Fasten the Side Frames to the Main Frame (Item 1) using #10-32 Flat Head Screws (Item 6)
- 3. Install the 4 license plate mounting nuts (Item 5) into the Main Frame (Item 1)



ITEM	DESCRIPTION	QTY
1	MAIN FRAME	1
2	RIGHT FRAME	1
3	LEFT FRAME	1
5	#10-32 Nylock Nut	8
6	#10-32 X 1" Flat Head Screw	4

2022-2023 F150 Lightning Front License Plate Mount Frame Assembly

- 1. Install nuts (Item 5) into the grille clamps (Item 4).
- 2. Fasten the Main Frame Assy (Item 1) to the Lightning Grille (Item 2) using the Grille Clamps (Item 4) and #10-32 Flat Head Screws (Item 6). Adjust all 4 clamps while loose to ensure alignment before fully tightening the screws.
- 3. Install the license plate using the Pan Head screws (Item 7)



ITEM	DESCRIPTION	QTY
1	MAIN FRAME ASSEMBLY	1
2	LIGHTNING GRILLE	1
3	LICENSE PLATE	1
4	FRAME GRILLE CLAMP	4
5	#10-32 NYLOCK NUT	8
6	#10-32 X 1" FLAT HEAD SCREW	8
7	#10-32 X 1/2" PAN HEAD SCREW	4

2022-2023 F150 Lightning Front License Plate Mount

3D Printer Bed Layout (Prusa Mk3S)

Print Clamps in this orientation to maximize strength

